

Fishing & Boating Services

Blue Crab Public Hearing – Aug. 11, 2020



Blue Crab Regulations / Public Hearing

AGENDA

Poplar Island Crab Pot Line

- Background
- Proposal Details
- Questions & Answers
- Public Comment

Fishing & Boating Services

Blue Crab Public Hearing – Aug. 11, 2020



BACKGROUND

Expansion of Poplar Island

- Poplar Island restoration project began in 2001
- When complete will cover roughly 1,825 acres of bottom
- The underwater habitat provided by the eroding island was desirable habitat for crabs and very productive for crab potting
- Due to the expansion of the project, suitable crab potting bottom (~575 acres) has been lost and effort has been squeezed into a very small area

Fishing & Boating Services

Blue Crab Public Hearing – Aug. 11, 2020



PROPOSAL DETAILS

Relocate Eastern Bay Crab Pot Line

- Mitigate the impact of lost bottom for crab pots due to Poplar Island Restoration Project
- Move the Eastern Bay crab pot line inside Harbor Cove to open up roughly 600 acres to crab pots
- Does not expand use of crab pots into the tributary

Fishing & Boating Services

Blue Crab Public Hearing – Aug. 11, 2020

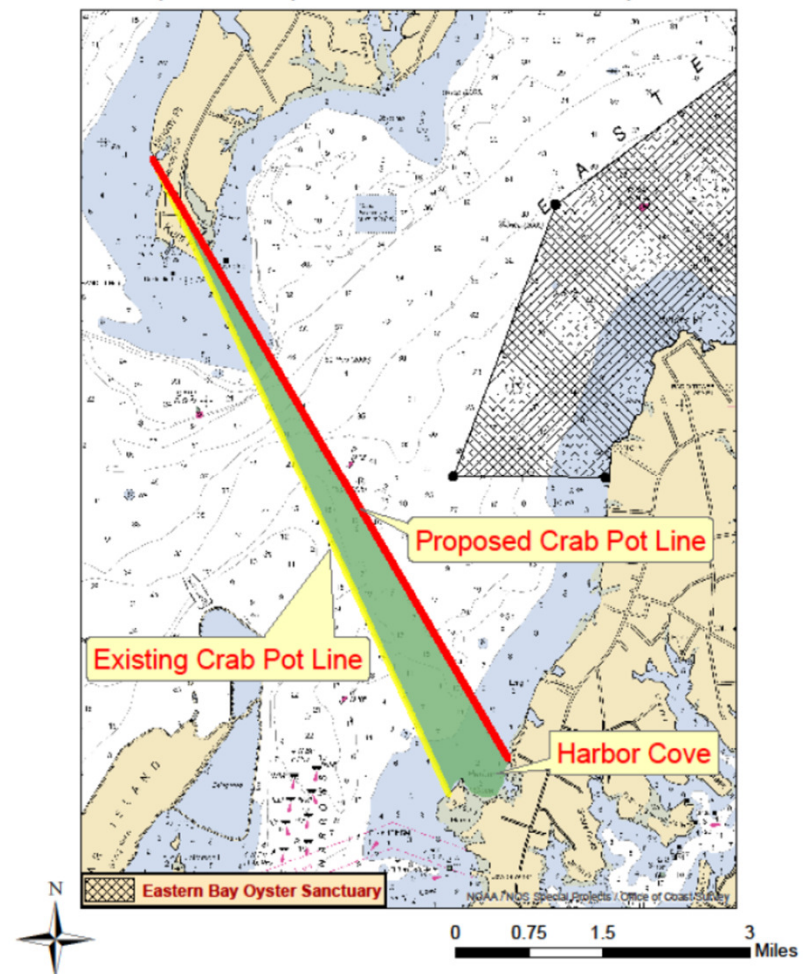


PROPOSAL DETAILS

Currently the crab pot line at the mouth of Eastern Bay extends from “...Lowe’s Point; thence in a straight line in a northwesterly direction to Bloody Point.”

Proposing to move the line inside Harbor Cove.

Potential Regulatory Movement of Crab Pot Line to Mitigate Expanded Poplar Island Restoration Footprint



Fishing & Boating Services

Blue Crab Public Hearing – Aug. 11, 2020



QUESTIONS & COMMENTS

- *Changes to Fishing Regulations – DNR Website Comment due by August 31st, 2020*
- *Questions and comments must be directed to the Department – not members of the public*
- *Questions and comments must focus on the proposal*
- *One person will speak at a time*
- *Be respectful of other viewpoints*

<https://dnr.maryland.gov/fisheries/Pages/regulations/changes.aspx#bcrabspop>